

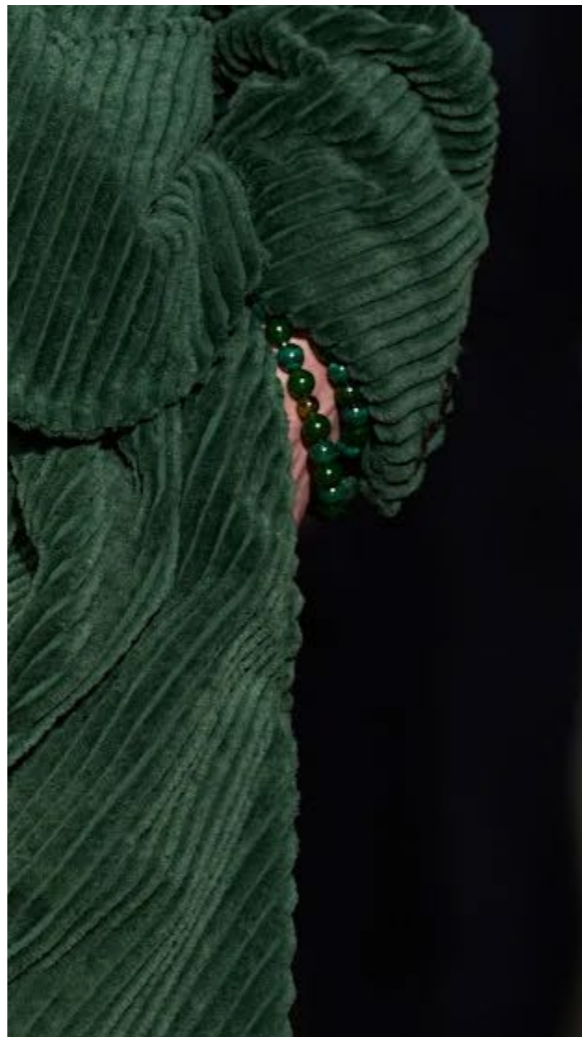


Materials:
Tie Clip, Cuff Links Set

Green: Peridot Quartz,
K18 Antique Yellow Gold Plated Brass

Brown: Smoky Quartz,
Oxidized Silver Plated Brass





Green



Black



Brown



Green

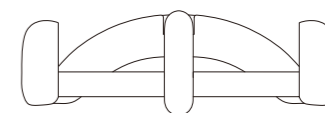
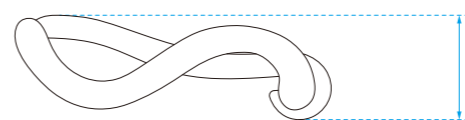
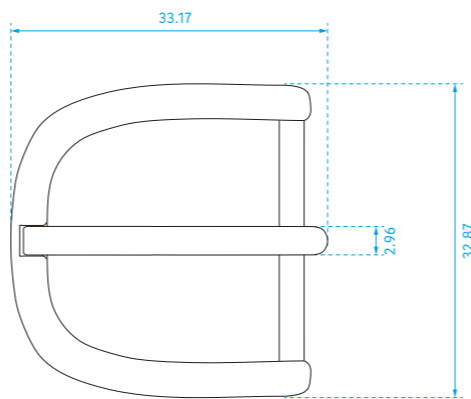
- Malachite
- Taiwan Jade
- Peridot

Black

- Golden Obsidian
- Black Striped Agate
- Smoky Quartz
- Onyx

Brown

- Brown Striped Agate
- Mother of Pearl
- Shungite

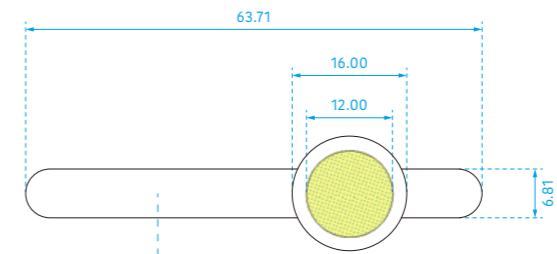


Materials:

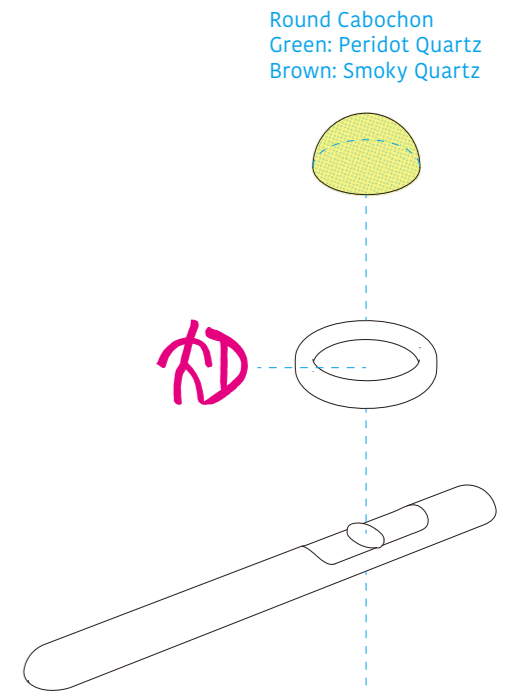
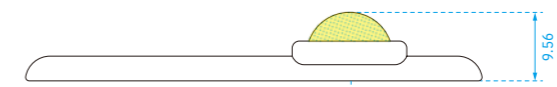
Wavy Belt Bickle

Brown: K18 Antique Yellow Gold Plated Brass, Leather

Black: Oxidized Silver Plated Brass, Leather



SOSHIOTSUKI

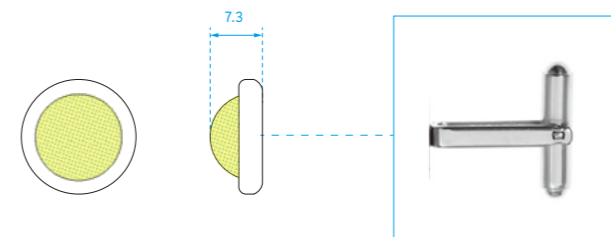


Round Cabochon
Green: Peridot Quartz
Brown: Smoky Quartz

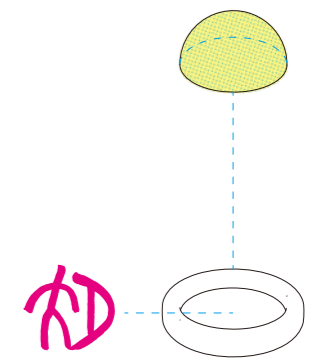
Materials:
Tie Clip, Cuff Links Set

Green: Peridot Quartz,
K18 Antique Yellow Gold Plated Brass

Brown: Smoky Quartz,
Oxidized Silver Plated Brass



Round Cabochon
Green: Peridot Quartz
Brown: Smoky Quartz





AW25 Materials:

Buckle: Brass (Matte Gold / Matte Silver Plated)
Leather: Cow-hide

SS26 Materials:

Buckle: Brass (Matte Gold / Matte Silver Plated)
Leather: Cow-hide

Black: Sliced Onyx Brown: Sliced Agate

AW25



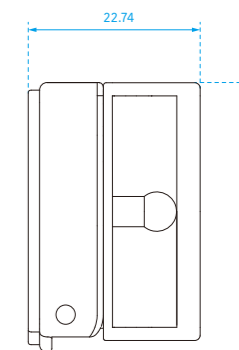
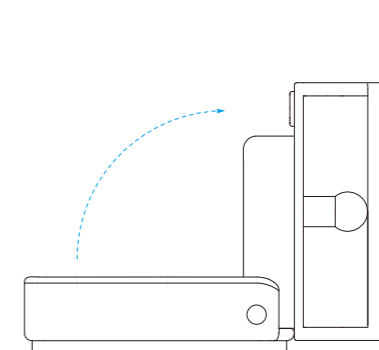
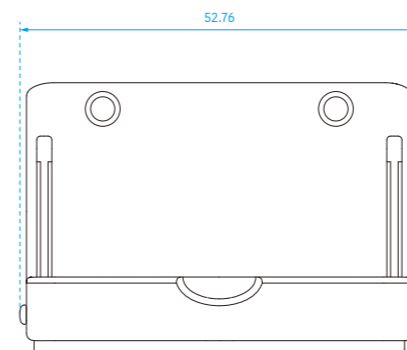
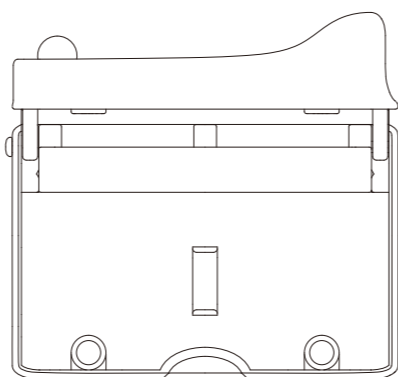
SS26

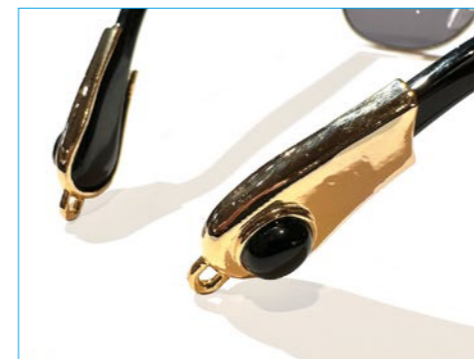


AW25

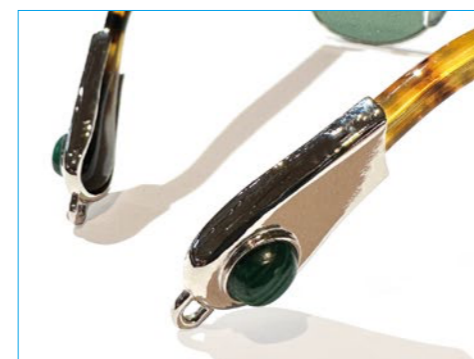


SS26





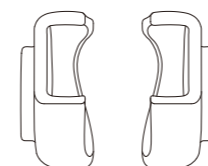
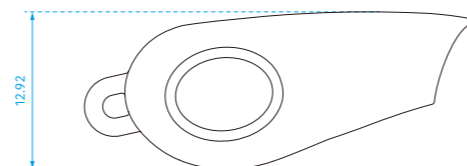
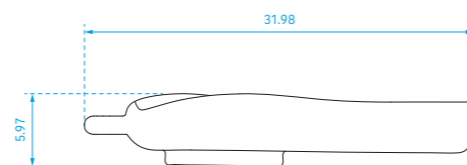
Onyx (oval cabochon)



Malachite (oval cabochon)

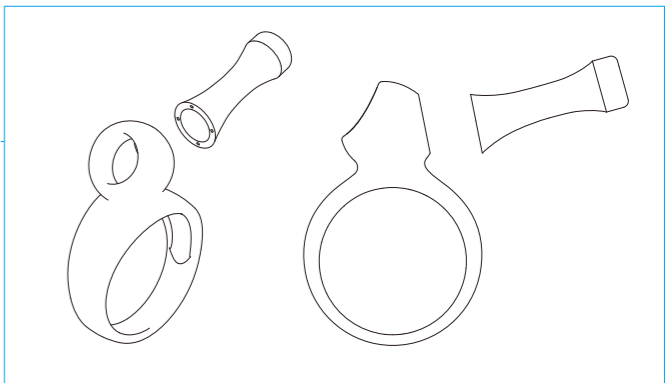
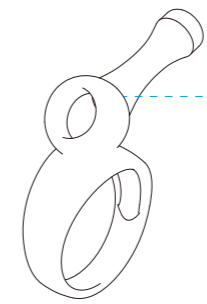
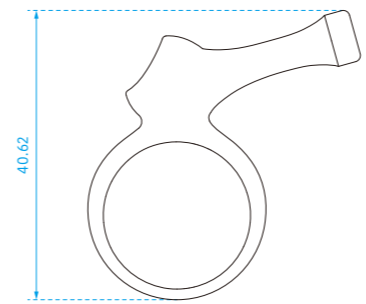
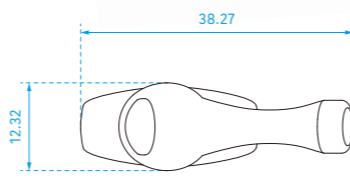


Alternative chain option



- Materials:**
 Glasses parts: Brass
 Gold Plated: Onyx
 Silver Plated: Malachite
 Glasses chain: Brass, Zinc alloy
 Gold Plated: Onyx
 Silver Plated: Malachite





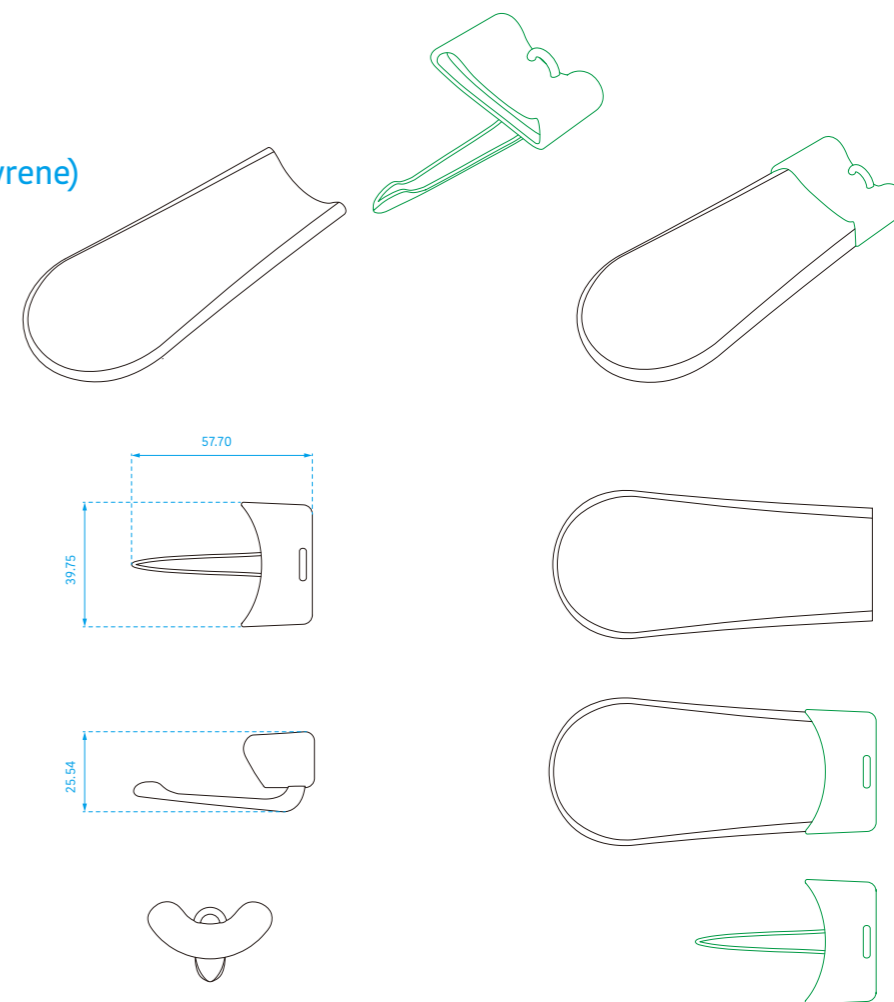
Materials:
Pipe ring: Brass (Gold/Silver plated), SV925 (Rhodium plated)



Materials:
Attachment cover: Brass, Zinc Alloy (Gold Plated)
Shoehorn: ABS Resin (Acrylonitrile Butadiene Styrene)



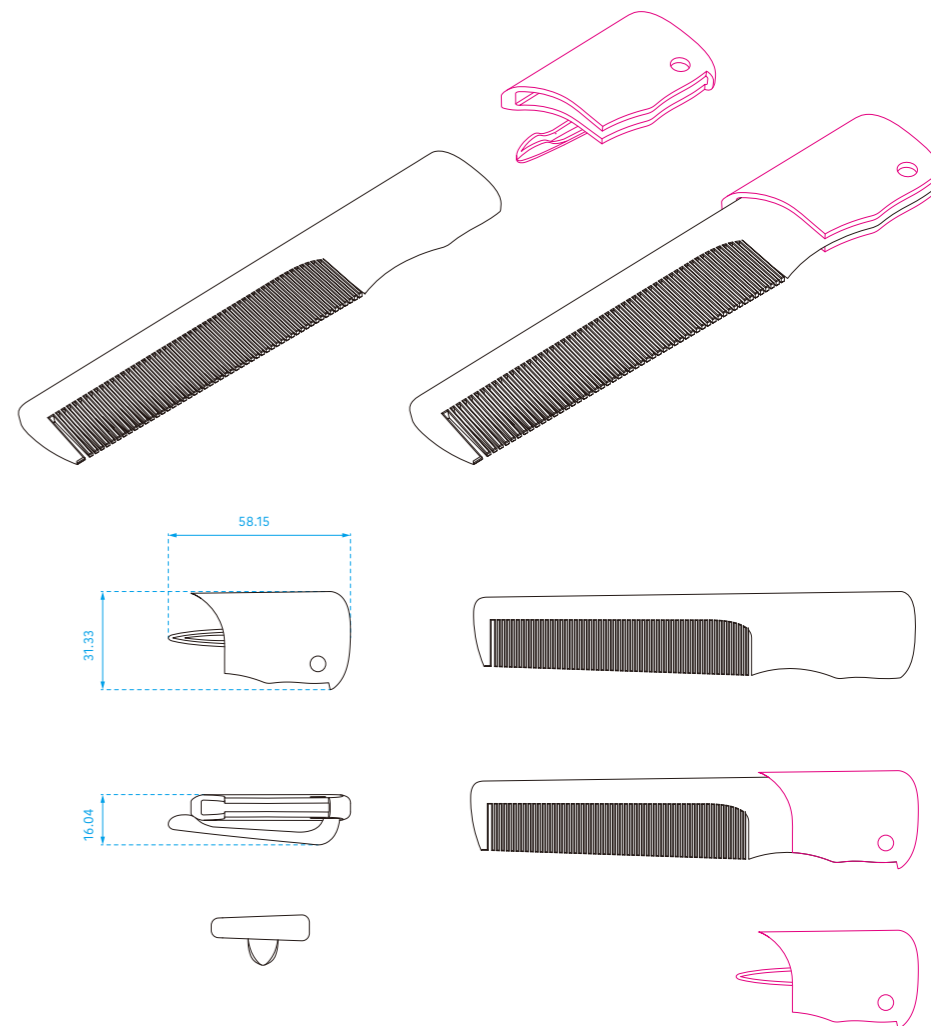
with keyring image



Materials:
Attachment cover: Brass, Zinc Alloy (Gold Plated)
Comb: Cellulose Acetate Propionate Comb



with keyring image



SS25
Brown Banded Agate
Bronzite
Smoky Quartz



SS26
Brown Agate



SS25
Golden Obsidian
Hypersthene
Black Obsidian



SS26
Black Onyx



SS25



Smoky Quartz

Black Obsidian

AW25



Brown Stripe Agate

Black Stripe Agate

SS25



Baltic Amber

SS25



'x

Series of Collar Accessory

Materials:

Beads

Black: Matte black onyx, Matte black stripe agate, Onyx

Brown: Brown stripe agate, Bronzite, Onyx

Chain: Brass (Matte Gold / Matte Silver Plated)



AW23



SS24



AW26

A safety-pin-style tie pin secures the tie to the shirt while gently lifting the knot, adding subtle dimension to the neckline and maintaining a neat, well-balanced, and beautiful silhouette.

Series of Cigarette Design

Materials:

Cigarette Box Case

Body: Stainless Steel, Synthetic Leather, Brass (Silver Plated)

Chain: Steel



AW25

Cigarette Earcuff
Brass (Gold plated)



SS25



Leather Collar keeper:
Used to support the collar structure, preventing distortion and ensuring the scarf maintains a balanced and beautiful silhouette.

