





**About:**

A collection of extravagant and hostile necklaces and ornaments using actual crystal chandeliers, inspired by the glitz, glamor, and unreality of host-clubs in Kabukicho, Shinjuku.

**Material:**

Crystal chandelier, Steel wire, Brass, Imitation pearl, Swarovski crystal



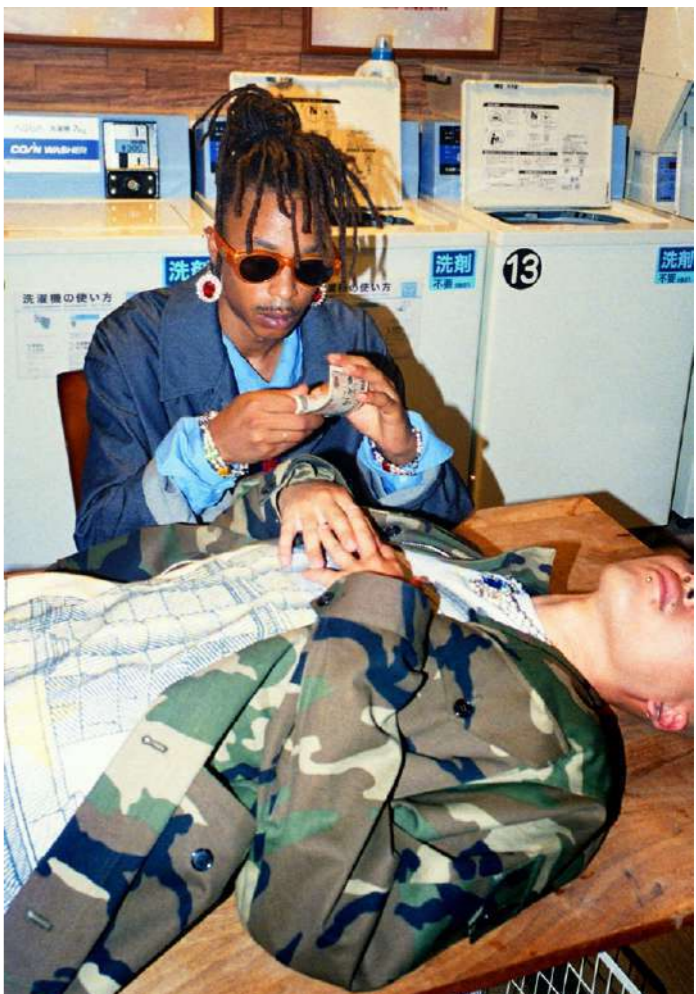
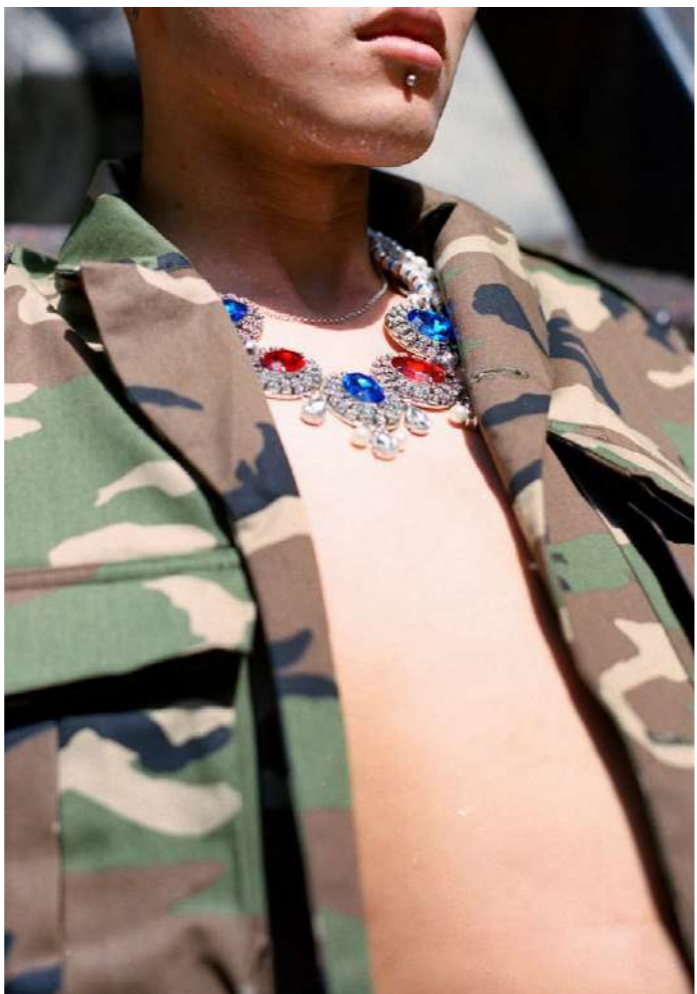
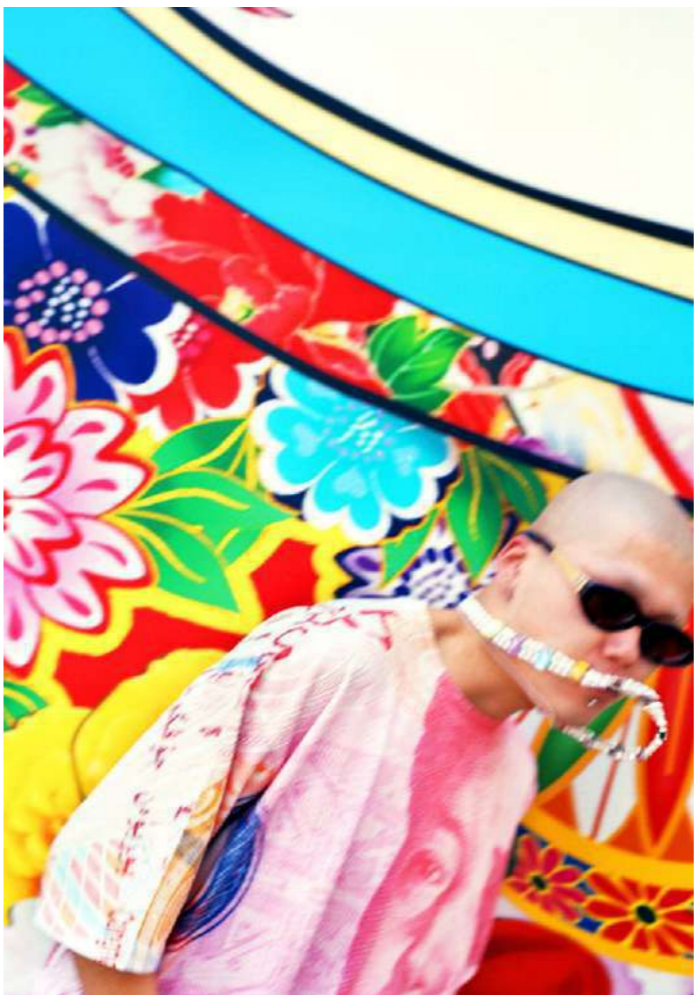
**About:**  
Chandelier crystal necklaces are covered in layered latex rubber and hardened in resin, rendered in vivid and playful colors.

**Material:**  
Rubberized resined chandelier crystal  
Steel, Brass



**About:**  
A collection of crushed and desecrated shoppers exploring the notions of iconography, authority, and logo as personal identity. The rubberized latex and acts as a disruptive element, examining the emptiness of brand worship.

**Material:**  
Rubberized resined luxury brands' shopper bag





Material:  
Silver plated brass, Cubic zirconia, Imitation crystals and pearls, Crystal rondel, Nylon coat wire



Material:  
Silver plated brass, Imitation crystals and pearls, Crystal rondel, Nylon coat wire



Material:  
Silver plated brass, Imitation pearls, French vintage beads, Nylon coat wire